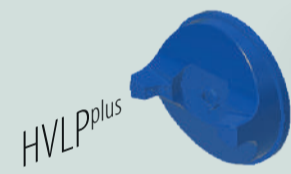


# TOPFINISH GA 1020/1030

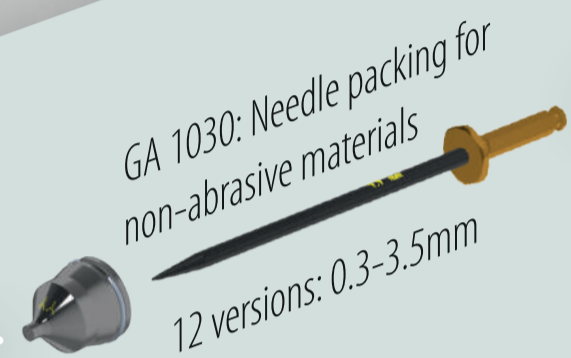
The perfect choice. Always.

## Extensive coating options, universally applicable



Conventional  
8/10/12/14 holes

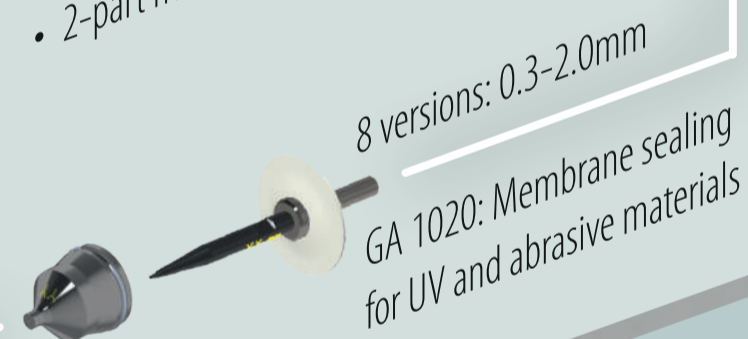
Various air caps for excellent atomization



GA 1030: Needle packing for non-abrasive materials  
12 versions: 0.3-3.5mm

## Low total cost of ownership

- Long lasting needles
- 2-part nozzle

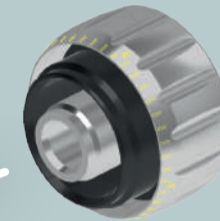


8 versions: 0.3-2.0mm  
GA 1020: Membrane sealing for UV and abrasive materials

## Superior coating quality



External or internal air control



Needle adjustment:  
Internal material flow rate adjustment



Fixed needle stroke:  
External material flow rate adjustment

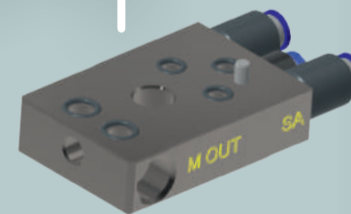
With or without circulation

## Flexible integration possibilities

For direct mounting



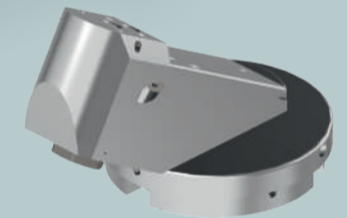
Various adapters



Fixing clamp mounting

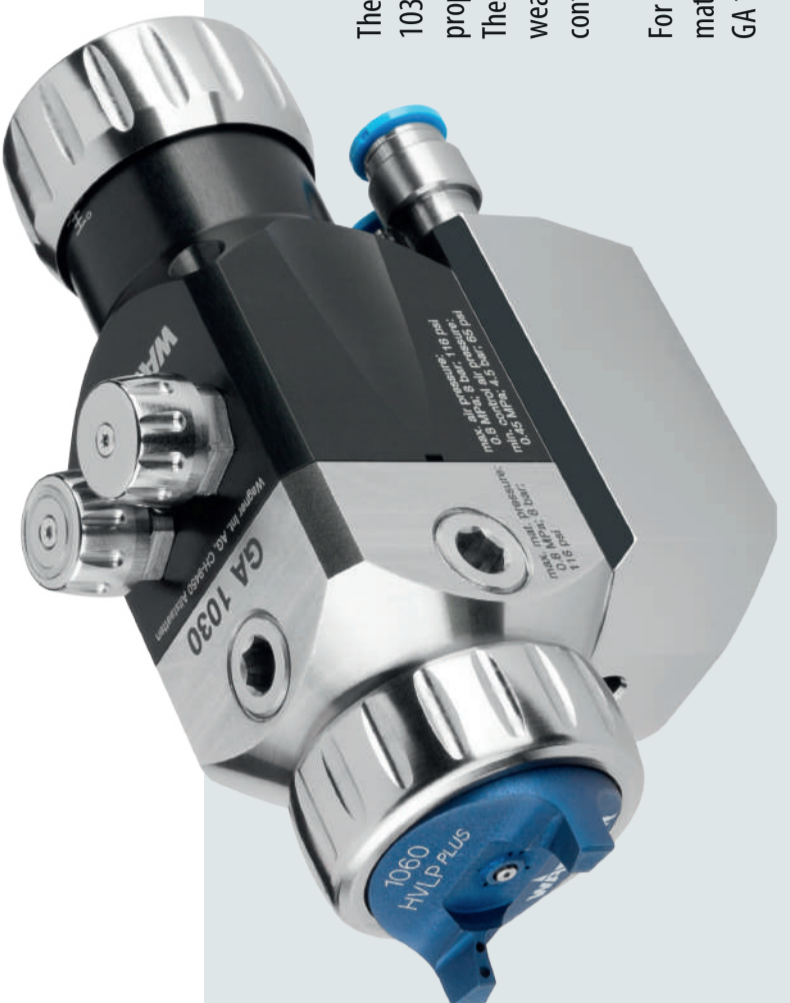


Direct mount hollow wrist



Quick exchange with TOPFINISH Robot Bell 1  
Robot mounting





For use with UV and highly abrasive materials, the gun is available as TOPFINISH GA 1020 with membrane seal.

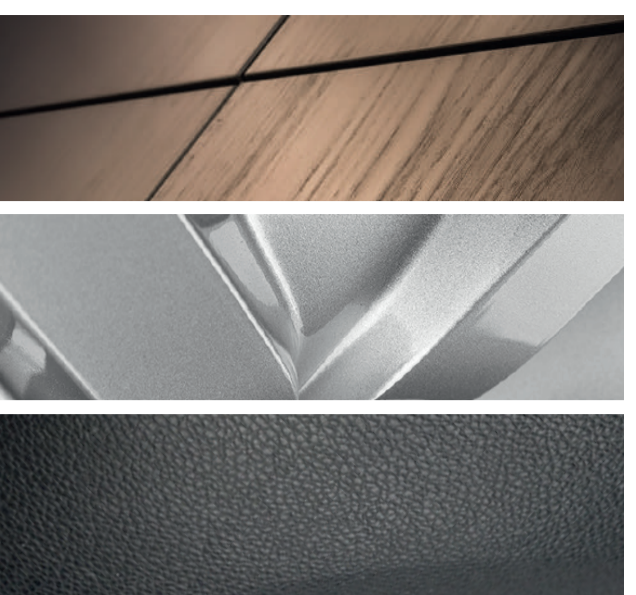
The universal spray gun is particularly low-wear and enables process-safe coating in continuous operation.

## Universally applicable airspray gun for automatic liquid paint applications.

**TOPFINISH GA 1020/1030**

**WAGNER**

**WAGNER**



## Extensive coating options.

### Universally applicable

- For the coating of workpieces made of wood, metal, leather or plastic, where a high-quality appearance is essential
- Water and solvent-based materials (wetted parts made of stainless steel)
- Large selection of nozzle and needle sizes for
  - Low to high viscous materials
  - Coatings with high solids content
- UV and highly abrasive materials (GA 1020 version with membrane seal)



## Perfect integration.

### Configure your needs

- Direct mounting or via various adapters
- Back and side connections for flexible hoses
- Internal or external air control
- With or without circulation
- Dump valve as option

### Can be used with robots

- Adapter for robots and for TOPFINISH Robot Bell 1
- Fixed needle stroke for external material flow adjustment

## Lowest total cost of ownership.

### Lowest spare part consumption

- Needle with wear-resistant and low friction coating
- Optimized, extra durable needle packing
- Two-piece nozzle; only the nozzle head is exchanged

### High product availability

- Long maintenance intervals thanks to long-lasting components
- Fast exchange of wear & spare parts

## Superior coating quality.

### By perfect atomization

- Precisely manufactured air caps optimized for every nozzle and needle size
- Optimized air duct design
- Precise adjustment of the material flow via needle adjustment knob
- Air supply is interrupted automatically during the coating process as soon as the needle closes

## Technical data

TOPFINISH GA 1020/1030	Conventional (high pressure) HVL P <sub>min</sub> (reduced pressure) HVL P
Air cap index	0°, 30°, 60°, 90°, 120°
Nozzle size GA 1020	ø 0.3 - 2 mm
Nozzle size GA 1030	ø 0.3 - 3.5 mm
Material passage	ø 9 mm
Weight	< 650 g
Atomization air connection	Q5-1/8-8
Control air connection	Q5-1/8-6
Material connection	G 1/4"
Air inlet pressure	Max. 8 bar (116 psi)
Material pressure GA 1020	Max. 2.5 bar
Material pressure GA 1030	Max. 8 bar
Volumetric flow (liter per minute)	Conv. 12-387 HVL P <sub>min</sub> 273 HVL P 299
Switching time	20 msec
Max. material temperature	80° C
Max. air temperature	50° C

