

Easy as pie!



ProfiTech M
High-end control system

Simple, intuitive operation.
Excellent coating results.
Maximum productivity.

The efficient and easy way to high-quality

Quality you can rely on. The **ProfiTech M** control system from **WAGNER** gives you a clear overview of all your coating processes.

- High-quality coatings
- Minimal powder consumption
- Reliable user interface



coating results

WAGNER offers devices, equipment and systems for all areas of industrial surface coating. Our innovative products and solutions stand out in terms of their quality, efficiency and productivity.

With its ProfiTechM control system, WAGNER offers an ideal solution specially designed for easy operation.

The user benefits from a control system tailored to their individual needs. The user interface is designed according to the latest ergonomic principles to ensure maximum operating and coating efficiency.

- User-friendly visualization
- Touch & twist control concept
- Intuitive menu structure
- Wide variety of functions that can be configured individually



Consistency par excellence.

The control system **ProfiTech M**:
user-friendly and efficient – for high process reliability.



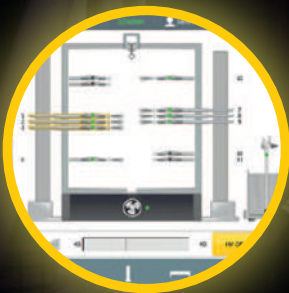
Easy to operate

All functions are controlled by a central display. The user-friendly operating panel is notable for its simple and accessible menu system. This enables the user to master process-critical or complex procedures such as color changes intuitively. Frequently used functions are available via a quick access facility.



Consistent quality

Up to 1000 coating parameter recipes can be stored. Recipes can be stored and assigned individual names in the recipe menu. This allows coating processes to be clearly archived and retrieved quickly. The recipes are managed in a logical and organised folder structure.



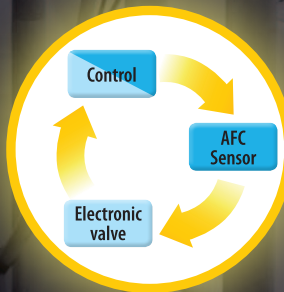
Easy to understand

Overview of system status, icon/text buttons and logical menu structure ensure reliable process control.



Our modular principle

Thanks to the flexible and perfectly coordinated components, systems can be designed and assembled to suit individual requirements.



Outstanding technology

AFC technology with genuine closed-loop control and comprehensive functionality produces coating results that meet the highest quality standards.

Modular structure for optimal performance.

The secret: a perfectly coordinated core concept.



Color display

For clear visualization of all the main control functions.

Control software

Field-tested in tough industrial environments for high system availability.

Control cabinet

For connecting components and integrating the system into the automatic production process.



Spray gun control system

Modular structure, space-saving, easily expandable.



Simple as a manual system

Manual interventions are still possible even in an automatic system.
Quick, safe and individual.



Transparent menu structure with clear pictograms

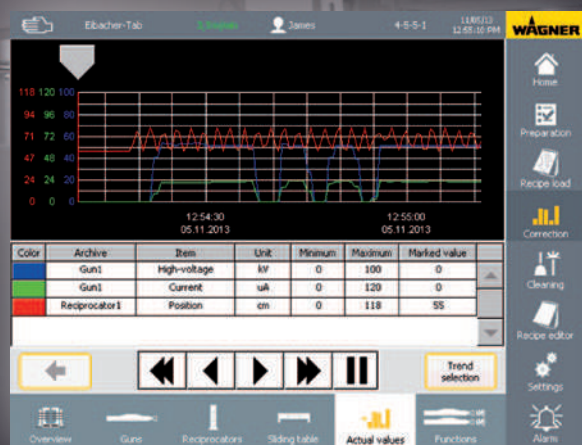
- Header with system status
- Right-hand menu bar
- Dynamic function bars along the bottom
- Graphic visualization area

- 1 Overview of system status
- 2 Reliable system start-up
- 3 Selection of coating recipe
- 4 Correction and optimization of current coating
- 5 Color change via operator dialog
- 6 Recipe storage and management
- 7 Higher-level functions and system parameters
- 8 Troubleshooting



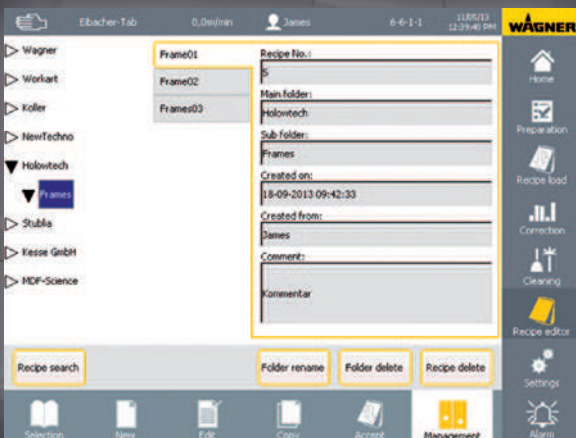
Reliable system start-up

Step by step to automatic operation.



Set/actual value

Display for analysis purposes



Recipe editor

Touch-control recipe selection, customized structure and labeling.



Color change procedure

Interactive and correctly sequenced, storage of color change duration.

Functions	Availability / definition
Technology	
• Control	Industrial panel PC with 10.4" color touchscreen
• Operation	Central, touch & twist
Configuration	
• No. of guns	Up to 32, Corona or Tribo
• No. of movement components	4 Vertical transfer carriages VU, 4 horizontal transfer carriages HU
• System configuration and parameters	Configuration wizard, interactive
• Operator	5 user levels for different access rights
• Languages	GER, ENG, F, IT, ESP, RUS, CHIN, other languages
Perfect coating results	
• Gun control system EPG S2	Digital high-voltage generator max. 100 KW Adjustable spray current limiter 3 cascade characteristic curves Digital air flow control for all air flows
• Movement control	Vertical transfer carriages and vertical positioners Horizontal transfer carriages
• 1000 coating recipes	Direct parameter transfer from current coating Customized 3-tier directory structure Data backup via USB interface
• Maintenance interval display	Guns, injectors, powder hose, vertical transfer devices, horizontal transfer carriages
Advanced coating automatization	
• Workpiece detection	3D workpiece contour height, depth, length
• Depth control	Dynamic gun spacing adjustment
• Automatic adjustment of powder volumes	According to feed speed
Powder saving thanks to reduction of overspray	
• Gap/height control	Guns only spray in workpiece area
• Depth control	Dynamic gun spacing adjustment
Color change, quick and reliable	
• Interactive user prompting	Correct sequence, automatic processes, recording of color change duration
Energy saving functions	
• Vertical transfer device stop	In workpiece gaps
• Booth ECO mode	(if equipped with frequency converter)
Convenience features	
• PC functions	PDF Viewer
• Synchronized recipe retrieval	Code catching
• Remote control for booth switch cabinet	On/off for fan, light, floor blow-out
• Internal logbook	Recording of operating states, downloadable via USB
• Remote control	LAN, WLAN remote system control, also controllable via tablet, iPad or android (owner's responsibility)
• Remote maintenance	Wagner Service

J. Wagner GmbH
Industrial Solutions
D-88677 Markdorf
Tel. +49 (0) 7544 505 - 0
Fax +49 (0) 7544 505 - 1200

J. Wagner AG
Industrial Solutions
CH-9450 Altstätten/SG
Tel +41 (0) 71 7572211
Fax +41 (0) 71 7572323



www.wagner-group.com

