

**The automatic airspray gun  
WAGNER TOPFINISH GA 1900 ensures brilliant  
surfaces through fine atomization and thus  
meets high coating requirements.**



The **WAGNER TOPFINISH GA 1900** was specially developed for applications in continuous operation where high-quality surfaces are required. The certified stainless steel air caps are precisely manufactured and ensure repeatable coating results in high quality. The gun is therefore particularly suitable for coating a wide variety of components in the automotive industry.

- High precision and reproducible spray pattern
- Significant material savings thanks to an application efficiency of up to 85%
- Long service life of the gun due to the use of high-quality materials

#### **Low flushing & material consumption**

Through flushing and loss-optimized material guidance.

#### **Flexible possibilities**

The TOPFINISH GA 1900 can be used for a wide variety of paints.

#### **Automated applications**

The gun is suitable for use on robots. A 60° adapter is also available for such applications.

#### **Clean working environment**

Low spray mist and overspray through anti-cloud spray pattern.

#### **Short switching frequencies**

The gun can be switched on and off quickly and is therefore suitable for quick coating changes during the application.

#### **Gun change in seconds**

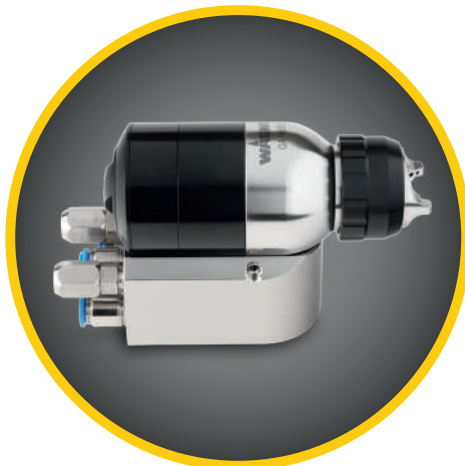
Various adapters allow the quick exchange of guns. These adapters are available with or without circulation, optionally with integrated flushing valve.

#### **Easy-to-clean design**

The round design prevents large-scale material deposits on the gun housing.

#### **Long service life**

The diamond-coated material needle with permanent lubrication reduces production downtimes.



## Technical data

Characteristics	Values
Dimensions	Length: 119 mm Height: 49 mm Width: 52 mm
Weight	890 g
Atomizing air pressure	Max. 9 bar
Forming air pressure	Max. 9 bar
Control air pressure	Min. 5,5 bar - max. 9 bar
Material pressure	Max. 18 bar
Air connection	DN 10 / 8 / 6
Material connection	G 1/8"
Switching time	< 30 ms
Spray jet width	Max. 340 mm - 480 mm
Gun head, air cap, nozzle	Stainless steel
Material needle	Stainless steel, hardened and diamond-coated

## Processable material

- Solvent-based paint 1K / 2K
- Water-based paint 1K / 2K
- UV paint
- Sol-gel

## Available variants

Variant	Description
TOPFINISH GA 1900 EC	Automatic gun with external control
TOPFINISH GA 1900 EC C	Automatic gun with external control and circulation

## Accessories

Type of accessory	Description
Different air caps	Standard / medium / small
Adapter robot	60° adapter with integrated flushing valve
Adapter TF RobotBell 1	60° adapter for TF RobotBell 1
0° adapter with circulation	For 1K material with circulation with integrated flushing valve and screw fittings
0° adapter without circulation	For 2K material without circulation and with screw fittings
Further adapters on request	

## Typical applications

- Interior & exterior components of automobiles
- Plastic components